

# EDGE™

## Gain the tactical advantage.

With Edge™, the latest advancement in law enforcement thermal imaging, you get all the benefits of a heavy-duty tactical tool that fits your budget.

## ERGONOMICALLY DESIGNED for you

Any thermal imager can detect heat and potential threats. Edge just makes it easy. Engineered with the latest infrared technology and useful, yet intuitive, features, Edge gives you the details without distracting complexity. Sleek ergonomics and the arms-length viewable display are designed to facilitate how you work.

## POWERFUL, intuitive operation

Features include reversible polarity, which enables you to quickly adjust the image for maximum detail, and the unique "Nocturnal" mode that colors the image in red, helping your eyes more quickly adjust to the environment when looking away from the display. Edge can go stealth with the touch of a button, dimming and then turning off the display.

An optional display shield quickly converts Edge to monocular viewing for situations demanding complete concealment.

## SMALL and LIGHT

At 1.5 lbs., Edge handles all of your tactical work without weighing you down.

## EXTREME DURABILITY

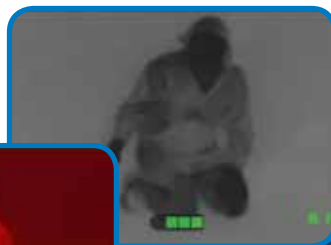
Some thermal imagers can survive bumps and can take a splash of water. Bullard thermal imagers are designed for environments where drops and water sprays are just part of normal operations. We bring that same philosophy to our law enforcement line. Edge is built Bullard Tough, engineered for your toughest mission and designed to be a critical tool in your arsenal.

## BUDGET friendly

At less than \$5000, Edge is an economical solution for law enforcement organizations deploying thermal imagers across their operations.



White Hot Mode



Black Hot Mode



Nocturnal Mode





## Technical Specifications

### Overall TI Unit

Weight with battery	1.5 pounds
Without battery	1.25 pounds
Dimensions	Height: 3.4" Length: 6.5" Width: 4"
Water Resistance	IP67
Impact/Drop Test	No functional damage, 6' drop

### Casing

Shell Material	Ultem® Thermoplastic
Sealing	Silicone and Neoprene®
Display Cover	Polycarbonate

### Core/Detector

Type	Uncooled Microbolometer with Digital Processing, Pixel Smoothing	
Resolution	Edge	80 x 60 array
	Edge 160	160 x 120 array
Sensing Material	Amorphous Silicon	
Spectral Response	8-14 Microns	
Thermal Stabilization	-40°F to 185°F	
Update Rate	30 Hz	
Temperature Sensitivity	< 0.050°C	
Video Output	NTSC	
NETD	< 50mK	
Pixel Pitch	17 μm	
Thermal Time Constant	12ms	
Video Polarity	White-Hot/Black-Hot/Nocturnal	

### Lens

Material	Germanium
Lens Size	7.5mm
Field of View	15.75°V x 21°H
Focus	.75m or 2.5' Fixed to infinity
Speed	f/1.4

### Electrical System

Power Source	NiMH Rechargeable Battery
Output	2.4V nominal
Capacity	1650 mAH
Operating Time	> 3 hours nominal
Start Up Time	< 4 seconds
Desktop Charger	20 VDC Input
Edge Powerhouse Charger	12-24 VDC Input
Switch Cycle Test	1,000,000 cycles
Battery Weight	0.25 pounds
Recharge Time	2 hours nominal

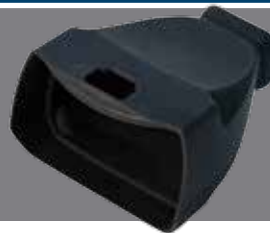
### Display

Type	Digital, Liquid Crystal Display (LCD)
Size	2.4" Diagonal TFT Active Matrix
Dot Pitch	0.1mm x 0.1525mm
Dot Format	160 x RGB x 234
Pixels	37,440
Pixel Configuration	R-G-B Delta Configuration
Back Light	L.E.D.
Brightness	250 cd/m2
Viewing Angle	Left/Right = 45°, Up/Down = 40°/20°

## Accessories



Edge Battery  
Charger Base



Edge Display  
Shield



Edge  
Powerhouse  
Charger

#### Americas: Bullard

1898 Safety Way  
Cynthiana, KY 41031-9303 • USA  
Toll-free within USA: 877-BULLARD (285-5273)  
Tel: +1-859-234-6616  
Fax: +1-859-234-8987

#### Europe: Bullard GmbH

Lilienthalstrasse 12  
53424 Remagen • Germany  
Tel: +49-2642 999980  
Fax: +49-2642 9999829

#### Asia-Pacific:

**Bullard Asia Pacific Pte. Ltd.**  
LHK Building  
701, Sims Drive, #04-03  
Singapore 387383  
Tel: +65-6745-0556  
Fax: +65-6745-5176

©2013 Bullard. All rights reserved.

Edge is a trademark of Bullard.

Neoprene is a registered trademark of the DuPont Company.

Ultem is a registered trademark of General Electric.

8445 (0713)